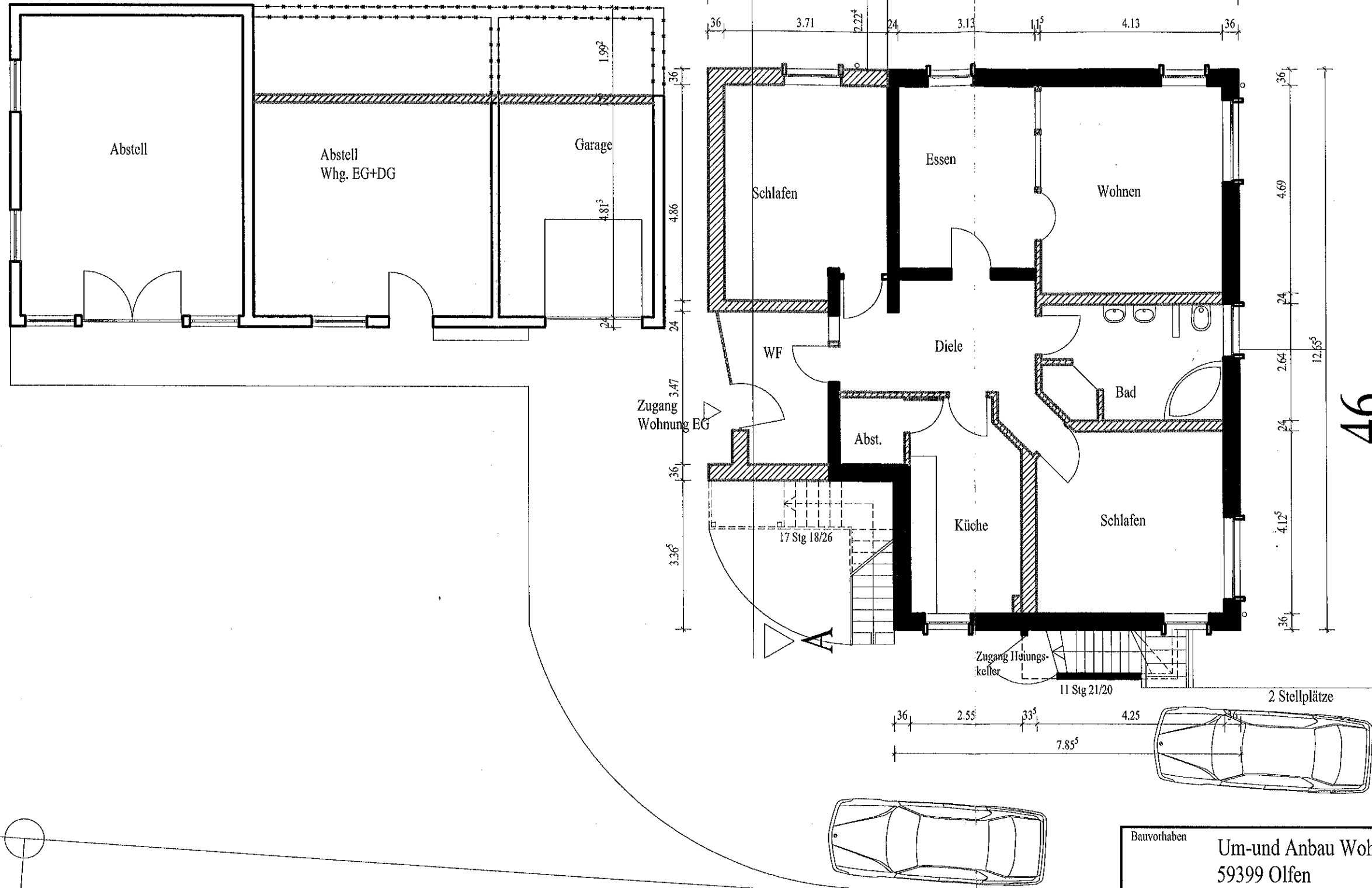
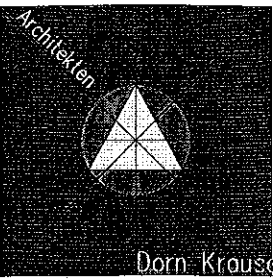


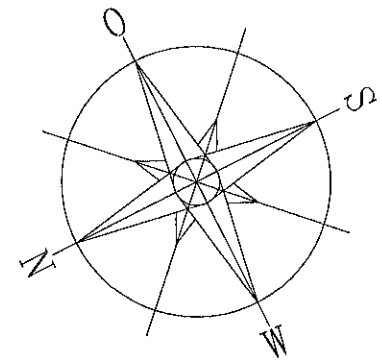
# Erdgeschoss


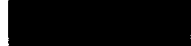
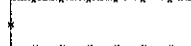
Architekten Dorn Krause



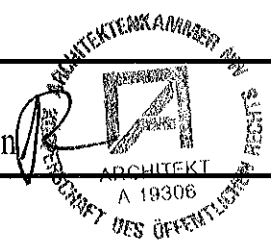
46

Kökelsumer Straße



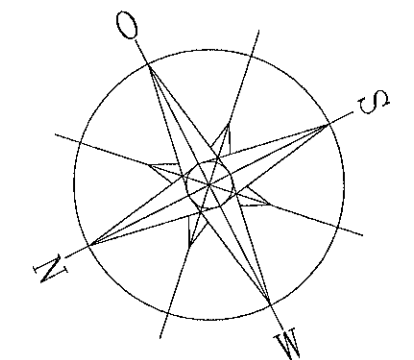
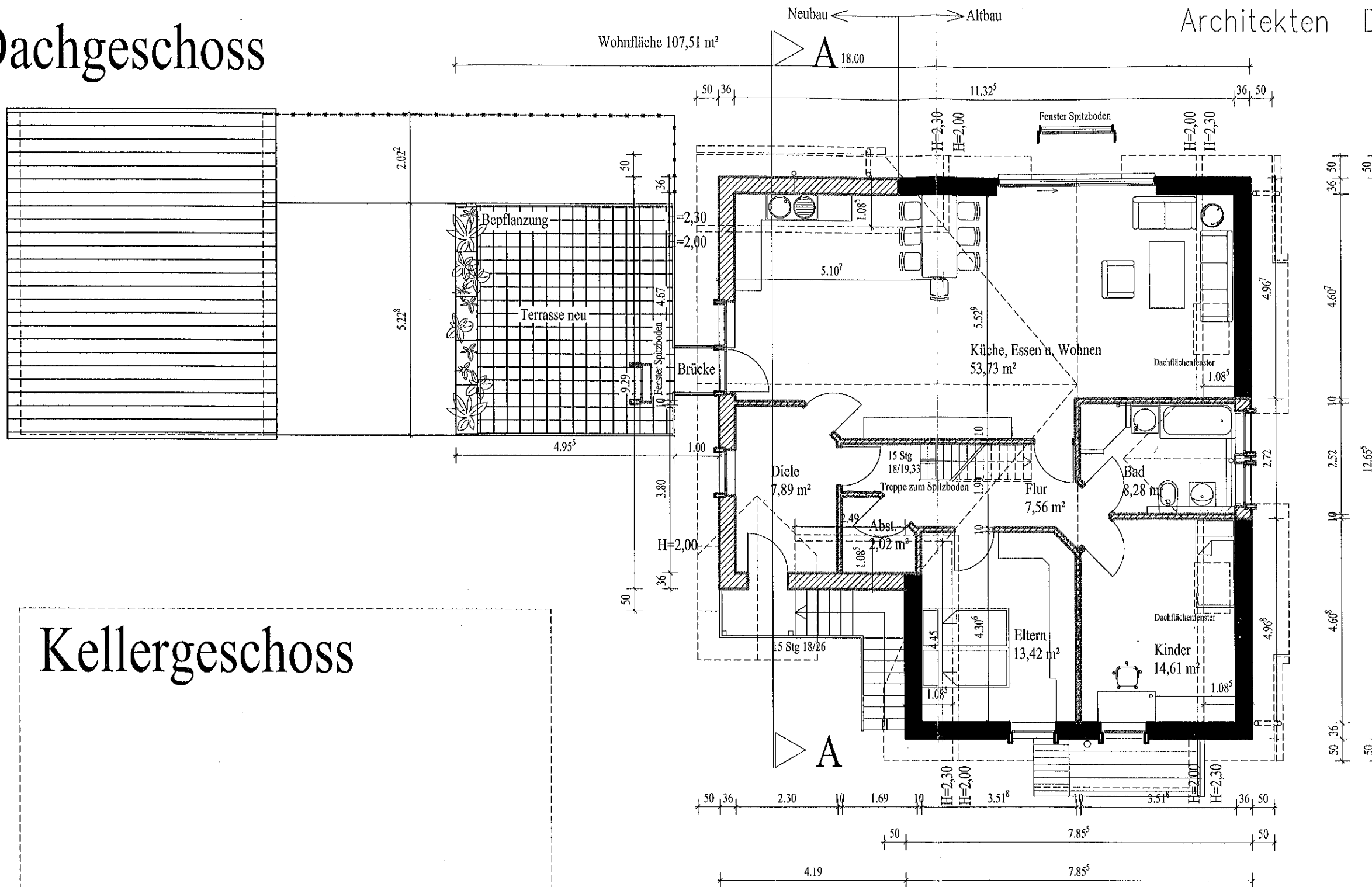
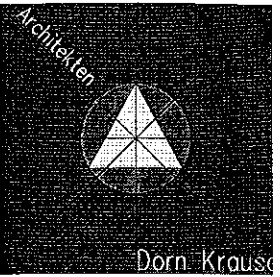
-  Neu
-  Vorhanden
-  Abbruch

Bauvorhaben				
Um- und Anbau Wohnhaus Kökelsumer Str. 46, 59399 Olfen				
Bauherr				
Architekten				
Architekten Dorn Krause Grüner Weg 1, 45884 Gelsenkirchen				
Inhalt				
Erdgeschoss				
Maßstab	Datum	geändert	Sachbearbeiter	Blatt Nr.
1:100	02.07.2008			1

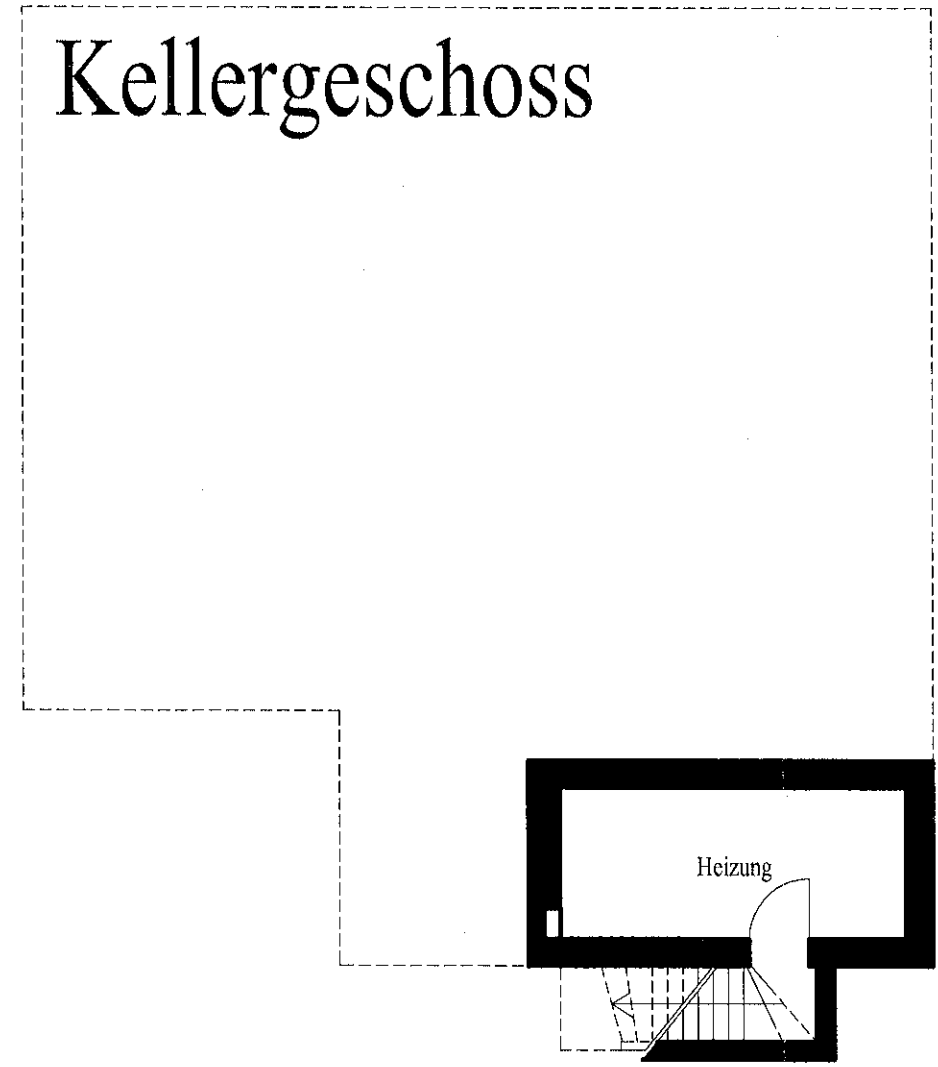


# Dachgeschoss

Architekten Dorn Krause

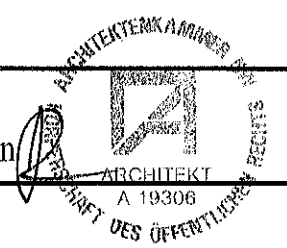


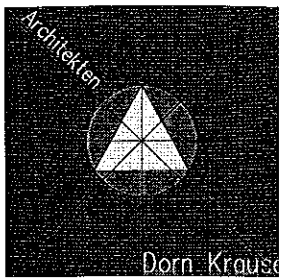
# Kellergeschoss



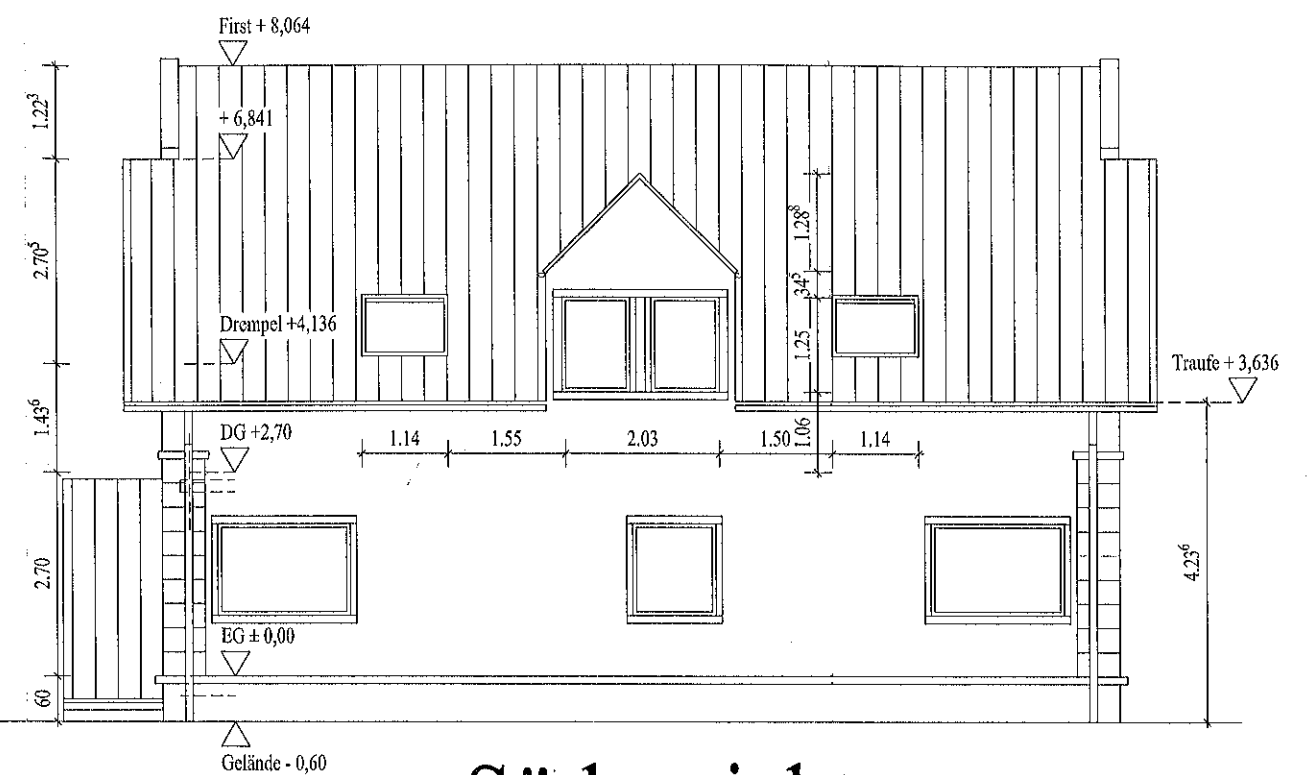
- Neu
- Vorhanden
- Abbruch

Bauvorhaben	Um-und Anbau Wohnhaus Kökelsumer Str. 46, 59399 Olfen			
Bauherr	<input type="text"/>			
Architekten	Architekten Dorn Krause Grüner Weg 1, 45884 Gelsenkirchen			
Inhalt	Kellergeschoss, Dachgeschoss			
Maßstab	Datum	geändert	Sachbearbeiter	Blatt Nr.
1:100	02.07.2008			2

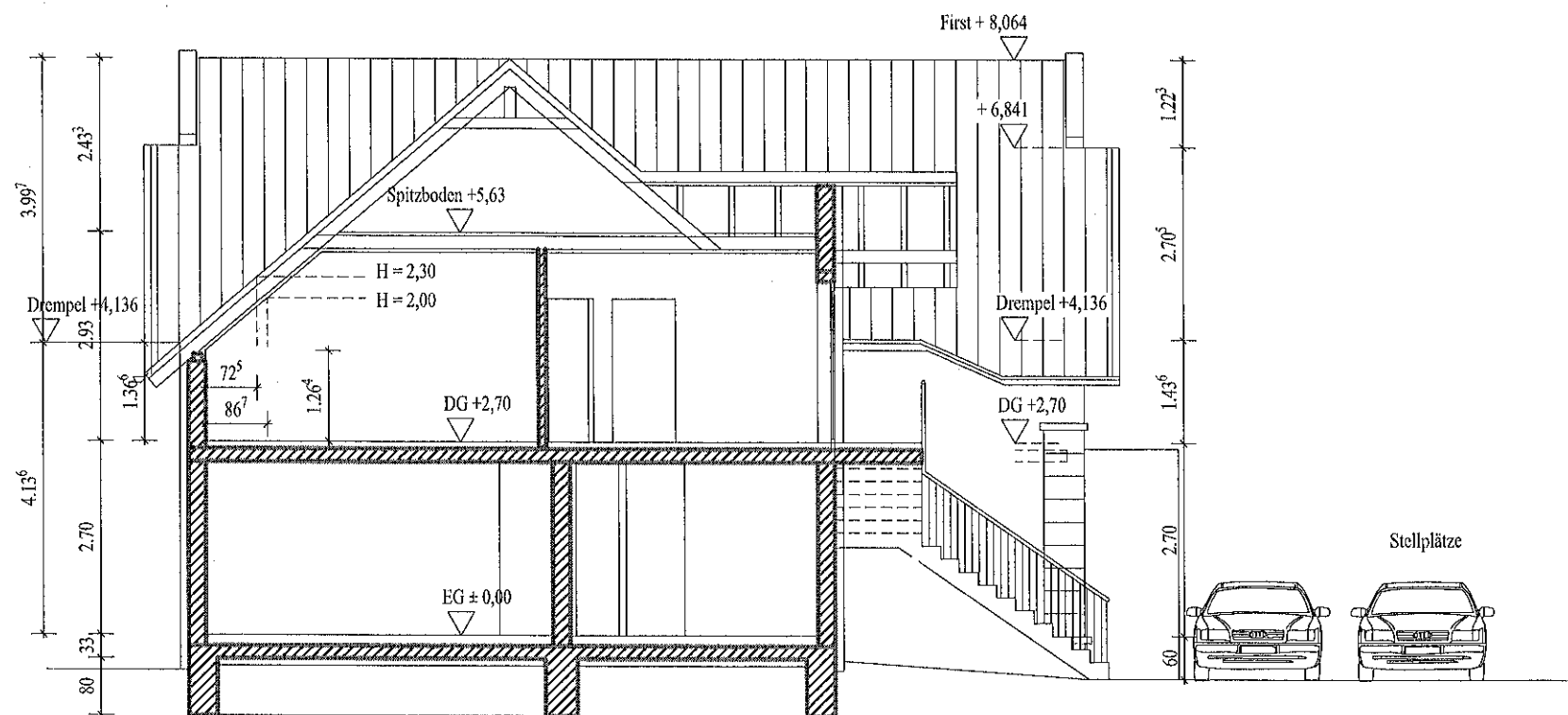






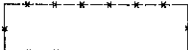
Nordansicht



Südansicht

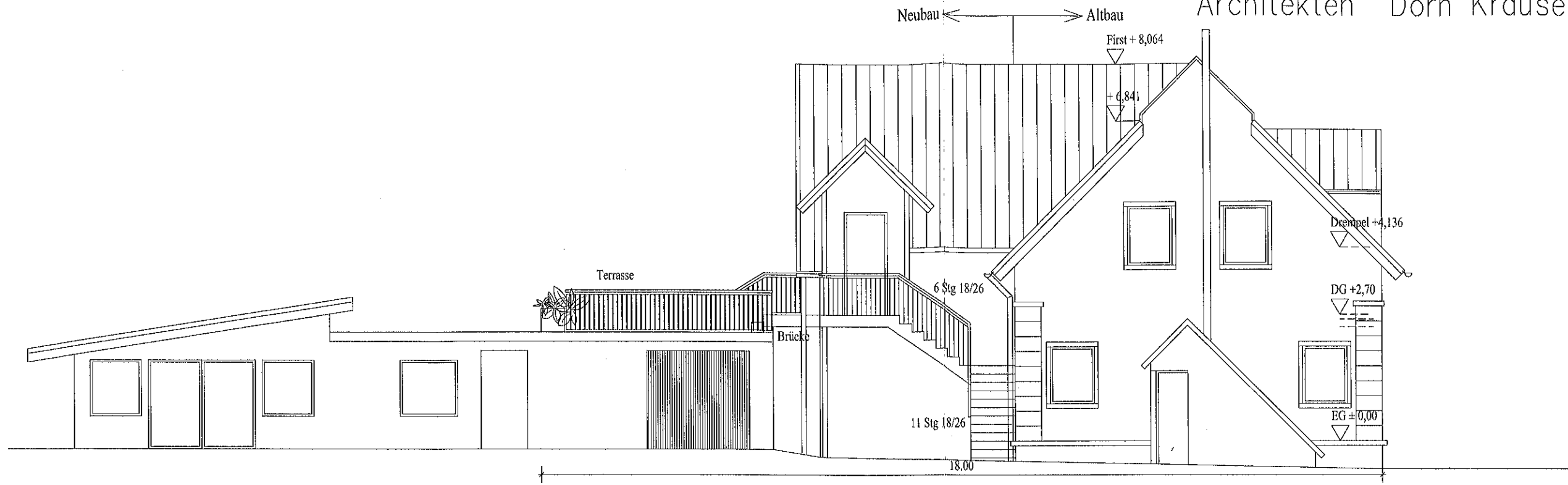
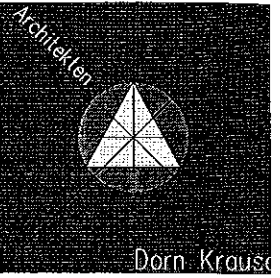


Schnitt A-A

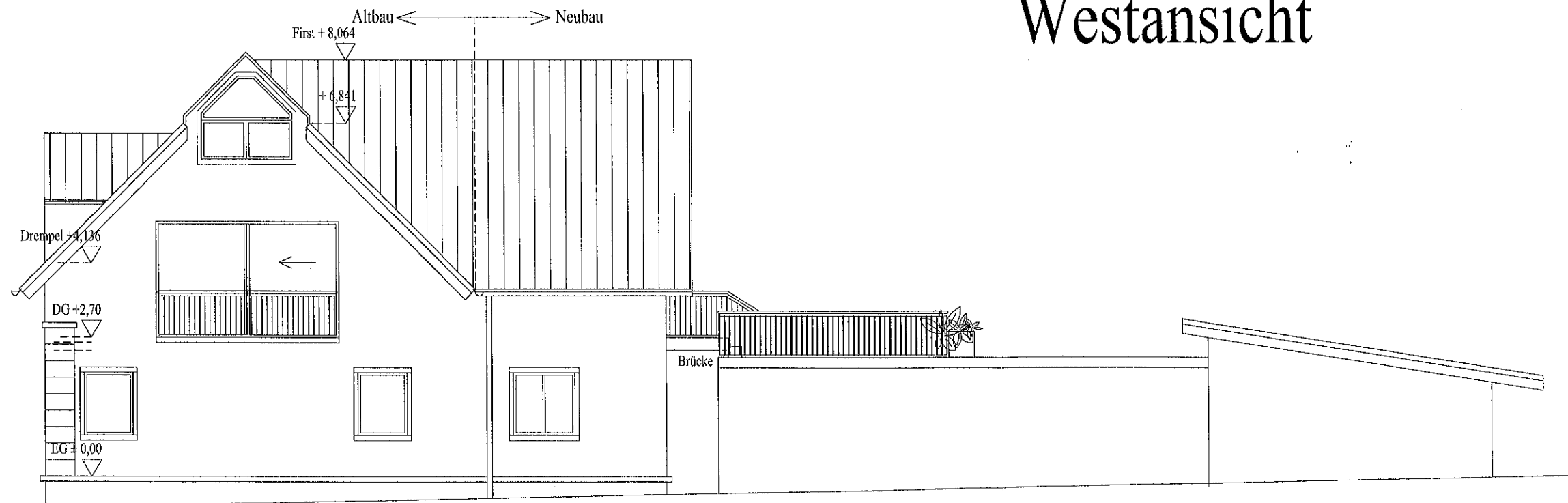
-  Neu
-  Vorhanden
-  Abbruch

Bauvorhaben	Um- und Anbau Wohnhaus Kökelsumer Str. 46, 59399 Olfen			
Bauherr	<input type="text"/>			
Architekten	Architekten Dorn Krause Grüner Weg 1, 45884 Gelsenkirchen			
Inhalt	Nordansicht, Südansicht, Schnitt A-A			
Maßstab	Datum	geändert	Sachbearbeiter	Blatt Nr.
1:100	02.07.2008			3





Westansicht



Ostansicht

Bauvorhaben				
Um-und Anbau Wohnhaus Kökelsumer Str. 46, 59399 Olfen				
Bauherr				
Architekten				
Architekten Dorn Krause Grüner Weg 1, 45884 Gelsenkirchen				
Inhalt				
Westansicht, Ostansicht				
Maßstab	Datum	geändert	Sachbearbeiter	Blatt Nr.
1:100	02.07.2008			4

